

GROUNDBREAKING THERMAL BINDING WITH DROP&GO TECHNOLOGY

Accel ultra

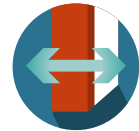


FASTER, STRONGER BINDING IN A FLASH.

Our revolutionary high-performance, off-line, automated, binding machine is here. The new Accel series boasts the fastest and most productive binding speed in the industry.

• Greater strength and quality for your documents

• More efficient than ever



Thick Documents?

Inquire about the
Accel Ultra+

New ground has been broken in document binding efficiency with the new Accel Ultra. Designed with the high-end user in mind, the Ultra boasts double the loading capacity and has cut processing time in half. Our third generation thermal binding machine binds one document per second - 45 times faster than punch & bind and 30 times faster than tape binding.

Our innovative Drop&Go Technology truly sets the Ultra apart from all others. By batch-feeding up to 50 documents into the machine, the operator is free to work in parallel. You simply Drop&Go!

Thanks to its intuitive simplicity, ease of use, and binding speed, the Accel Ultra is the ideal binding solution for users that bind large volumes of documents at once; many times the perfect solution for large print room or CRD environments.

The Accel Ultra is available for purchase or lease.
Contact your Binding Efficiency Expert for details.

BONUS!
System includes
additional desktop
unit for editing.



DOCUMENT SIZE

8.5" x 11" — portrait bound orientation

SYSTEM CAPACITY

From 1 to 150 sheets of 20 lb. paper.

PROCESSING SPEED

Batch-load up to 50 documents at one time. Bind one document every second.

Performance is subject to user environment.

DOCUMENT SPINE WIDTHS

1/16", 1/8", 1/4", 3/8", 1/2", 5/8"

MACHINE DIMENSIONS

L 29.5" x W 25" x H 17"

MACHINE WEIGHT

106 lbs

POWER SUPPLY

115V, 50/60Hz





A. OVERHEAD

Once pages are placed in the automatic cover size selector, the machine will show the correct cover spine width to use on the display.



Batch-feed up to 50 unbound documents and covers into the Ultra. The machine moves your documents to the thermal binding belt.

B. FRONT AND RIGHT SIDE

Documents are transported through the binder. The fully automated thermal binding process includes heating/cooling of glue and paper jogging/aligning.



C. BACK AND LEFT SIDE

Smooth panels allow the Accel Ultra to be conveniently placed in a corner to save floor-space.



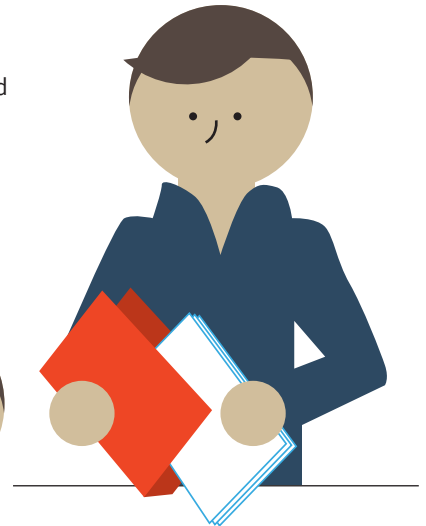
The cooling tray expands to accommodate documents as they emerge; bound and ready to use.

HOW DROP&GO WORKS

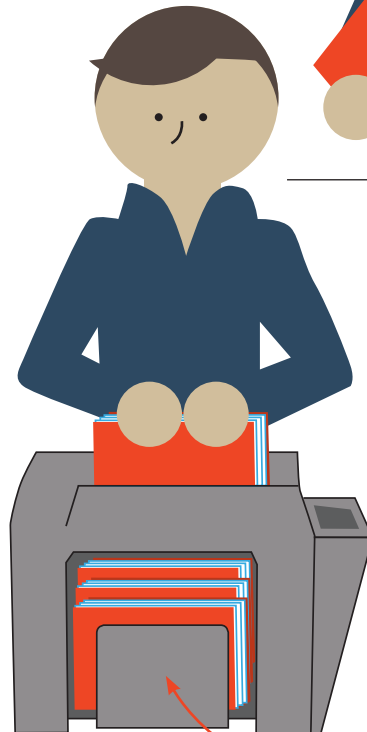
1. Insert one set of papers to be bound in the automatic cover size selector. The display will show the correct cover spine width to use.



2. Place document pages in a Coverbind cover, with the correct spine size, and align.



3. **DROP** the ready-to-bind documents when the green LED indicator light is lit.



4. **GO!** The machine will signal when the thermal binding process is complete. Remove the bound document(s) from the cooling tray.

