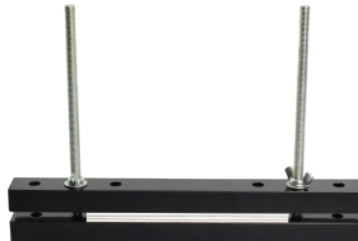


Padding Clamp

Instructions



Small
Spine Length up to 5"



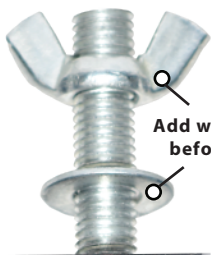
Normal
Spine Length 5" to 8.5"



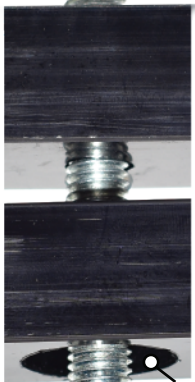
Wide
Spine Length 8.5" to 12"

Using a wider setting than what is recommended may cause damage to clamp

Proper Bolt Threading



Add washer to bolt before wingnut.



Ensure bolt head sits flush in recess when clamping.

Clamping Notepads



Figure A

- 1 For thin stacks of notepads, lie clamp flat on it's side.(fig. A)
- 2 Insert binding edge of jogged pad into clamp, ensuring the edge is making full, flat contact with work surface.
- 3 Tighten wingnuts enough to hold paper firmly in place.
- 4 Flip Padding Clamp upright.(Fig. B)

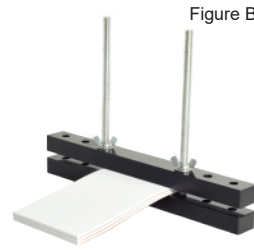


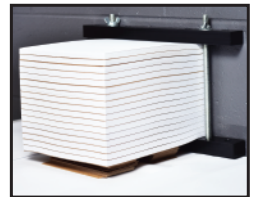
Figure B

- 5 Apply a thin layer of padding compound with a brush, starting from the center and brushing towards the edges.(Fig. C)



Figure C

- 6 Allow time to dry before adding more coats or releasing the Padding Clamp.



-For large stacks, place the clamp up against a flat surface.

-Add a 1" stack of paper or cardstock under the overhanging notepad stack.

-Place notepad stack inside clamp, flush with the flat surface.

-Tighten Clamp, turn clamped stack to expose edge to be glued.

