



THERMAL BINDING ACCELERATED *by* DROP&GO TECHNOLOGY

Bind one document every second

Our Drop&Go Technology has been enhanced making the Accel Cube an amazing two times faster than the previous generation, 45x faster than punch and bind, and 30x faster than tape binding. Rivalled only by the Accel Ultra, documents move through the machine at the rate of 60 documents per minute — dramatically boosting efficiency. The Cube features additional upgrades including increased quality and strength of the bound documents as well as improved appearance of the machine.

The Cube is the ideal binding solution for office/corporate walk-up print stations, as well as volume demanding CRD or commercial print environments. It delivers professionally-bound documents, without the need of trained operators.



The Accel Cube is available for purchase or lease.

Contact your Binding Efficiency Expert for details.

Bonus!

System includes additional desktop unit for editing.



Document Size	8-1/2" x 11" - portrait bound
System Capacity	From 1 to 150 sheets of 20lb paper
Processing Speed	Loading up to 4 documents at one time. Bind one document every second.
Document Spine Width	From 1/16" to 5/8"
Machine Dimensions	L19" x W20" x H15"
Machine Weight	60 lbs
Power Supply	115V, 50/60Hz



Coverbind Division

3200 Corporate Drive, Wilmington, NC 28405
coverbind.com or call 1-800-366-6060

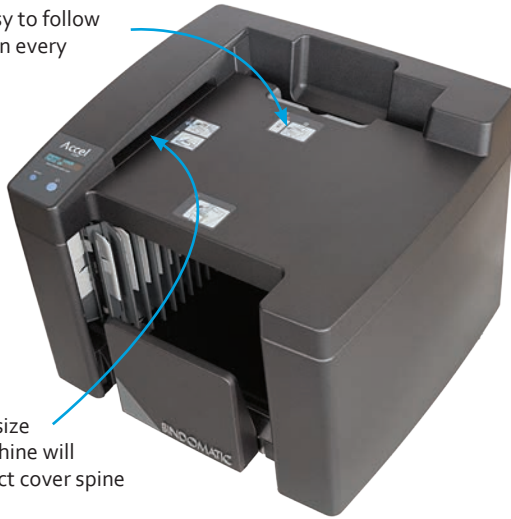
Spiral Headquarters

1 Maltese Drive, Totowa, NJ 07512
spiralbinding.com or call 1-800-631-3572

Accel Cube from every angle

A. FRONT AND RIGHT SIDE

Step-by-step, easy to follow instructions are on every Accel Cube.



Once pages are placed in the automatic cover size selector, the machine will display the correct cover spine width to use.

B. BACK AND LEFT SIDE

Insert unbound documents (up to 150 sheets) and covers into the Cube.



C. FRONT AND LEFT SIDE



The thermal binding belt fuses your document pages and covers together in seconds, then moves the finished documents to the cooling tray.

The cooling tray expands to accommodate your documents as they emerge; bound and ready to use.

How to use the Accel Cube

Making a professional impression is simple. Create a perfect-bound or soft or hard cover book with the Accel Cube using these simple steps

1 Insert the set of papers to be bound in the automatic cover size selector. The display will show the correct cover spine width to use.



2 Insert the document in the appropriate Coverbind cover, making sure all pages are aligned correctly.



3 Load up to three the ready-to-bind documents when the green LED indicator light is lit.



4 The machine will signal when the thermal binding process is complete. Allow the finished books to rest spine-side-down on the cooling tray for two minutes before removing.