



Materials

1. Silver Linings™ Mounting Frame
2. Photo print
3. Self-healing cutting mat
4. Photo gloves
5. Silver Linings™ Alignment Tool
6. Roller
7. Silver Linings™ Protective Cutting Guide*
8. Straight cutter



*optional accessory

Prepare the Frame

Step 1



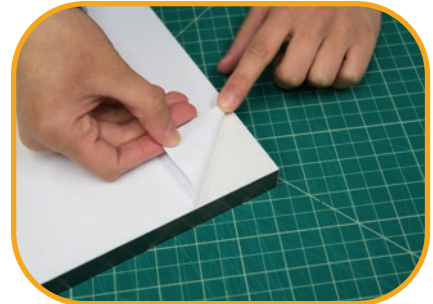
Remove the frame from the protective sleeve and place it white side up on the cutting mat.

Step 2



Place one corner of the frame against the alignment tool. The tool must be close to the frame's corner.

Step 3



Peel back film from the corner opposite the alignment tool and crease the liner so the flap lays flat.

Adhere the Photo

Step 4



Put on gloves and brush away any debris from the back of the photo.

Step 5



Place the photo gently on the frame making sure not to stick the photo to the exposed adhesive yet.

Step 6



Slide the photo onto the ledge of the alignment tool.

Continued...

Step 7



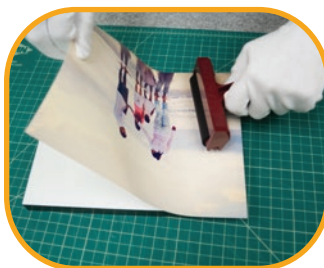
Holding the photo against the alignment tool, gently press the corner of the photo onto the exposed adhesive.

Step 8



Lift the loose end of the photo and peel the rest of the liner back.

Step 9



Use the roller to roll photo onto exposed adhesive from the stuck corner outward to avoid trapping air bubbles.

Step 10

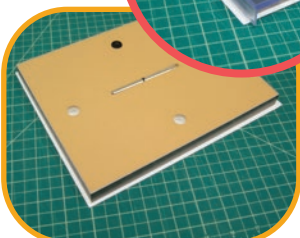


Roll over print again in all directions, pressing firmly to fully adhere photo to the frame.

Trim the Photo

*Additional instructions for using the Silver Linings™ Protective Cutting Guide.

Step 11



Flip the frame face down. Be careful not to scratch the photo on cutting mat. *Place the cutting guide flush against the side you will be cutting.

Step 12



Press cutter (straight or rotary) firmly against the frame edge at a 45° angle. *The optional cutting guide provides this angle. Place the blade firmly against the protective cutting guide.

Step 13



While holding the frame steady, press the cutter down firmly and drag the blade down the edge of the frame. *Press against the edge of the guide while cutting.

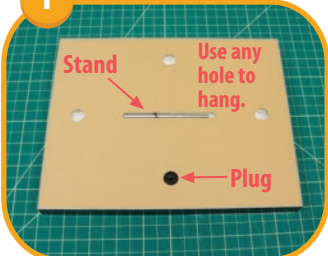
Step 14



Repeat steps 12-13 to trim the other three sides of the photo flush with frame. Place finished mounted photo back in the protective sleeve.

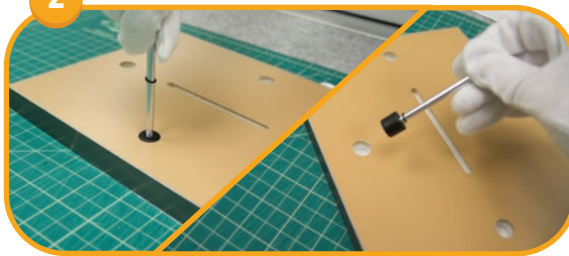
Displaying the Photo

1



Use any hole to hang or remove stand from slot.

2



Screw stand into black plastic plug. The plug should be in the hole nearest the bottom edge of the photo. If it is not, remove the stand and plug by pulling on the stand. Then reinsert into the correct hole.

3



Set the photo down with the stand.