

VeloBind®

Binding Systems

VeloBind® offers a professional look without staples, glue or chemicals. With VeloBind®, it is easy to achieve consistently attractive and professional results.

Model 373

Maximum productivity in a desktop binding system. The best punch and bind machine for mid to high-volume users. Binds up to 3" thick documents in seconds.



Specifications

Punching Capacity:	30 sheets (20 lb bond) per cycle
Max. Binding Capacity:	3"
Binding Speed:	Approx. 10 seconds
Dimensions:	23.5"W x 11.75"H x 17.25"D
Weight:	48 lbs.
Power:	Standard 120 Volts, 60 Hz., 5.6 amps

VeloBind® Supplies

A wide selection of covers and strips are available.



Spiral

Where Finishing Begins.™

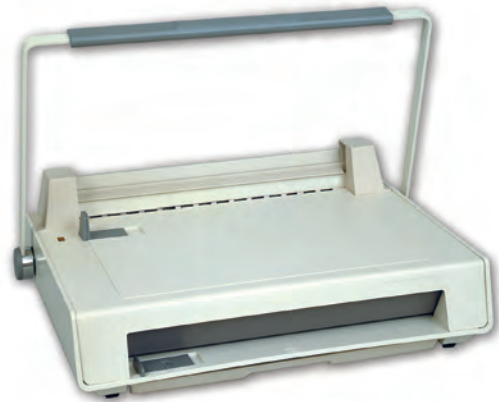
Spiral Binding Company, Inc. : www.spiralbinding.com

New Jersey : New York City : Illinois : Texas : California : Ontario : Quebec
800.631.3572 800.631.3572 800.621.4762 800.443.1710 800.382.3349 800.361.9685 800.361.9685

velobind_1105

Model 170

Affordable, professional quality binding for low to mid-volume users. The Model 170 is designed for maximum versatility. Bind a few pages or documents as large as 250 pages.



Specifications

Punch:	Manual
Max. Binding Capacity:	1"
Binding Speed:	Approx. 10 seconds
Dimensions:	20"W x 7"H x 15"D
Weight:	28 lbs.
Power:	Standard 120 Volts, 60 Hz., 5.6 amps

Model 270

Electric punch capabilities make the Model 270 the best system available for mid-volume users. Bind documents up to 2" thick quickly and professionally.



Specifications

Punching Capacity:	22 sheets (20 lb. bond)
Max. Binding Capacity:	2"
Binding Speed:	10-15 seconds per cycle
Dimensions:	23.5"W x 11.75"H x 17.75"D
Weight:	46 lbs.
Power:	Standard 120 Volts, 60 Hz., 5.6 amps

