

## iJetColor Pro Inkjet Packaging Press

The iJetColor Pro is the first light industrial-class printer that uses a highly reliable vacuum conveyor system to deliver products for personalization, text, and imaging, utilizing an industry-leading single-wide print-head that delivers 6ips and 12ips full-color inkjet imaging.

The newest version of the iJetColor Pro™ is a high-speed, light industrial envelope press that can print full-color envelopes of various sizes and shapes for volumes up to 7,120 variable images per hour on #10 envelopes. This newest version provides improved feed and material handling to manage a variety of stock from 2" x 3-1/2"\* up to 14" x 17"\*.

**SUPPORTS MEDIA FROM  
2" x 3½"\* UP TO 14" x 17"\***

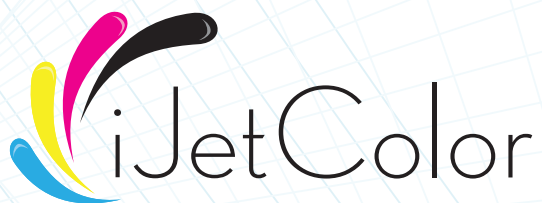
**HIGH SPEED -  
5,000-10,000  
PIECES PER HR**

**CUSTOM FEEDER AND  
OUTPUT SYSTEM  
NOT SHOWN**



**DO MORE WITH AN ENVELOPE.**

\* Feeder dependent



## The iJetColor Pro InkJet Press

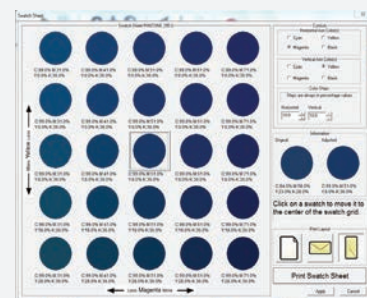
The iJetColor Pro is a high-speed, light industrial envelope and packaging printer that can print full color. With the capability to print short-run, full-bleed variable data jobs or odd-sized materials, the iJetColor Pro is your workhorse to produce cost-effective, personalized materials easily and profitably.

Proven originally in high-volume print and mailing operations, this product maximizes speeds of the Memjet printhead and overcomes all other roller-fed sheet printers in the marketplace using vacuum belts. Our experience with over 1,000 sheet-fed Memjet printer installations under our iJetColor brand was the impetus for designing and launching this light industrial inkjet workhorse.



### Color Matching RIP

The iJetColor Pro system incorporates leading color-management tools, workflow, comprehensive industrial touchscreen operation and full training, support, and supplies from Printware, a leading equipment provider to the industry for over 30 years.



Adjusting the overall color of the entire job is quick and easy with the industry-exclusive iJetColor PMS tools and built-in global color adjustment. Whether the job contains RGB, CMYK, spot colors, or a combination of all of these, the global color-adjustment tool will adjust the color of the entire job.



iJetColor Pro Specifications	
Max Feed Size	12"x17" w/ std feeder 14"x17" w/ upgraded feeder
Max Print Width	8.7"
Minimum Feed Size	2"w x 3-1/2"h
Max Feed Thickness	1/4" w/ std feeder 3/8" w/ upgraded feeder
Speed	#10 Portrait Full Bleed, High Quality - <b>Up to 1,750 per/hr</b> #10 Landscape Addressing, High Speed - <b>Up to 7,120 per/hr</b> Coin or corrugated, High Speed - <b>Up to 10,000/hr</b>
Resolution	Best 1600 x 1600dpi or Normal 1600 x 800 dpi
Ink Tank Capacity	2 Liter, CMYK
Color Matrix	Up to 16.8 million available colors
Bundled Computer Platform	Core i5 with 8+ GB RAM, min 500 GB drive
Connections Required	Ethernet, 110-240 VAC
RIP	Navigator 11 RIP/ Server Configuration, Color profiles and Spot Color Matching. Computer platform included.

*Specifications subject to change without notice.  
iJetColor is a trademark of Printware, LLC.*



800-631-3572  
spiralbinding.com